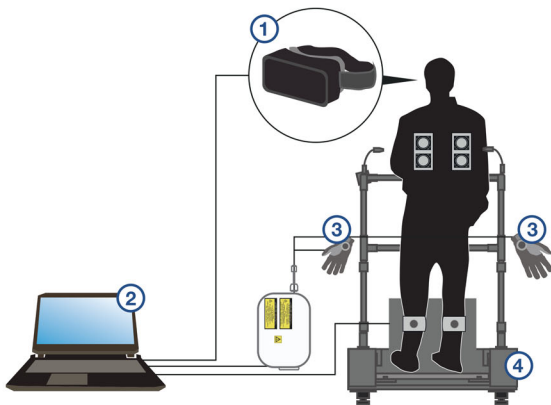
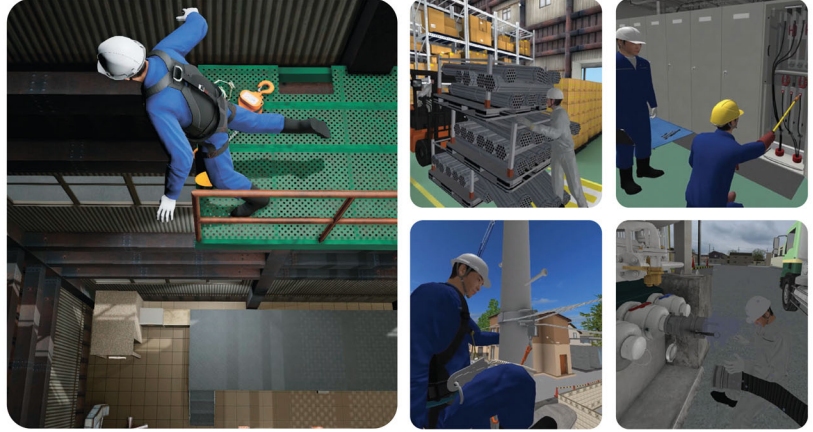
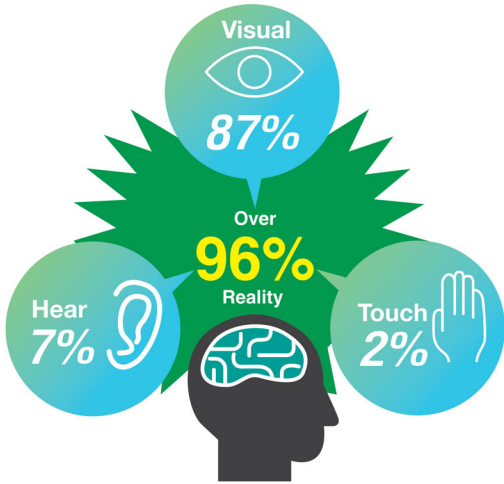


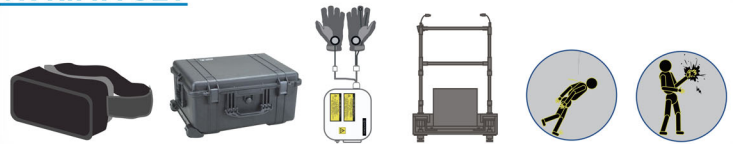
VR RiMM (Risk Management Method)

ACCIDENT EXPERIENCE

Enhance Your Staff's Safety Consciousness



VR RiMM SET



EASY TO USE



MORE THAN 100 SCENARIOS

- | | | | | | | | | | |
|--|---|--|---|--|---|--|---|---|--|
| | | | | | | | | | |
| Forward crash
RiMM SCE-05 | Power board electric shock
RiMM SCE-06 | Drilling machine Rolled-in accident
RiMM SCE-07 | Belt conveyor pinched accident
RiMM SCE-08 | Forklift Forward accident
RiMM SCE-09 | Forklift Reverse accident
RiMM SCE-09 | Liquid flammable explosion
RiMM SCE-10 | Looking aside traffic accident
RiMM SCE-11 | Speeding accident at Night
RiMM SCE-11 | Slings come flying accident
RiMM SCE-12 |
| | | | | | | | | | |
| Initial firefighting evacuation
RiMM SCE-20 | Turning collision of Heavy machinery
RiMM SCE-15 | Press machine Caught
RiMM SCE-16 | Roller winding accident
RiMM SCE-17 | Kickback accident
RiMM SCE-18 | Cutting debris scattering accident
RiMM SCE-19 | Initial firefighting evacuation
RiMM SCE-20 | Cut wound accident by Cutter
RiMM SCE-21 | Scald accident
RiMM SCE-22 | Right-left turn accident
RiMM SCE-23 |
| | | | | | | | | | |
| Steam explosion
RiMM SCE-25 | Gas explosion
RiMM SCE-26 | Dust explosion
RiMM SCE-27 | Caught in bottom
RiMM SCE-28 | Train Accident under construction
RiMM SCE-29 | Train accident during crossing
RiMM SCE-30 | DAIWA-falling at Opening part
RiMM SCE-31 | Loading platform fall accident
RiMM SCE-32 | Net Trolley fall accident
RiMM SCE-33 | Crane extrusion accident
RiMM SCE-34 |