

MIDORI ANZEN

M
ミドリ安全
MIDORI ANZEN
THAILAND



NO.1 SAFETY SHOES IN JAPAN

Products For Safety, Health And Comfortable Workplace

UG3 SERIES

UG3695 BLACK



Steel Plate

ESD SAFETY SHOES STEEL TOE CAP

JIS T8103 Standard U Type (JIS)

Toe Cap	Wide Steel Toe Cap 200 J
Upper	Artificial Leather
Sole	Dual Density PU Sole
Midsole	Steel Plate
Insole	3D EVA Cup Insole
Size	22.0-28.0, 29.0, 30.0 cm (EEE)
Standard Weight	990g / pair (Reference Size 26 cm)
ESD Value	$1.0 \times 10^5 \leq R \leq 10^8$



ESD SAFETY SHOES STEEL TOE CAP

JIS T8103 Standard U Type (JIS)

Toe Cap	Wide Steel Toe Cap 200 J
Upper	Artificial Leather
Sole	Dual Density PU Sole
Insole	3D EVA Cup Insole
Size	22.0-28.0, 29.0, 30.0 cm (EEE)
Standard Weight	880g / pair (Reference Size 26 cm)
ESD Value	$1.0 \times 10^5 \leq R \leq 10^8$



UG3695 NAVY



UG3695 WHITE



ACF SERIES

ESD SAFETY SHOES STEEL TOE CAP (JIS) CE

ACF211



ACF210



ACF200



CE Standard EN: ISO 20345:2011/ JIS T8101 Standard

Toe Cap	Wide Steel Toe Cap 200 J
Upper	Authentic Leather
Sole	(Light Embossed Leather) Dual Density PU Sole (Slip Resistant)
Size	22.0-28.0, 29.0, 30.0cm (EEE)
Standard Weight	950g/pair (Reference size 26cm)
ESD Value	$1.0 \times 10^5 \leq R \leq 10^9$

ACF220



CE Standard EN: ISO 20345:2011/ JIS T8101 Standard

Toe Cap	Wide Steel Toe Cap 200 J
Upper	Authentic Leather
Sole	(Light Embossed Leather) Dual Density PU Sole (Slip Resistant)
Size	23.5-28.0, 29.0, 30.0cm (EEE)
Standard Weight	1,100g/pair (Reference Size 26cm)
ESD Value	$1.0 \times 10^5 \leq R \leq 10^9$



SIZE CONVERSION CHART

Midori Size (cm.)	22	22.5	23	23.5	24	24.5	25	25.5	26	26.5	27	27.5	28	29	30
Euro	35	36	37	38	39	40	41	42	43	44	45	46	47	48	49
UK	3	3.5	4	5	5.5	6	6.5	7	8	8.5	9	9.5	10	11.5	12.5

AG3 SERIES

ESD SAFETY SHOES RESIN TOE CAP 

JIS T8103 Standard Class S Safety Sneaker

Toe Cap: Wide Resin Toe Cap 70J
 Upper: Artificial Leather
 Sole: Dual Density PU Sole
 Size: 22.0-28.0, 29.0, 30.0 cm (EEE)
 Standard Weight: 750g / pair (Reference Size 26 cm)
 ESD Value: $1.0 \times 10^5 \leq R \leq 10^8$



AG3590 NAVY



NAVY

AG3595 NAVY



NAVY

AG3595 WHITE



WHITE

MPN305S


ESD SAFETY SHOES RESIN TOE CAP 

JSAA Standard Class A Protective Sneaker

Toe Cap: Wide Resin Toe Cap 70J
 Upper: Artificial Leather
 Sole: EVA Synthetic Rubber
 Size: 22.0-28.0, 29.0, 30.0 cm (EEE)
 Standard Weight: 800g / pair (Reference Size 26 cm)
 ESD Value: $1.0 \times 10^5 \leq R \leq 10^8$



MSZ090

RESIN TOE CAP 

JSAA Standard Class A Protective Sneaker

Toe Cap: Wide Resin Toe Cap 70J
 Upper: Artificial Leather
 Sole: Dual Density PU Sole
 Size: 22.0-28.0, 29.0 cm (EEE)
 Standard Weight: 780g / pair (Reference Size 26 cm)



NHF-600 HiGRIP THE 4th

RESTAURANT & HOTEL INDUSTRY 

JSAA Standard Class A Protective Sneaker

Toe Cap: Wide Resin Toe Cap 70J
 Upper: Artificial Leather
 Sole: EVA Foam / Synthetic Rubber
 Size: 22.0-28.0, 29.0 cm, 30.0 cm (EEE)
 Standard Weight: 610g / pair (Reference Size 26 cm)



MES-400 QUICK AND EASY CHECKING ESD SHOES AND WRIST STRAP CHECKER



ONLY STAND AND TOUCH

- Individually checks each ESD shoe
- Adjustable upper and lower threshold limits
- Checks ESD shoes and wrist straps simultaneously or separately
- Free software for displaying measurement data on a computer

Measure Resistance Level	Shoe High Limit 0.1MΩ / 1MΩ (Option 35MΩ) Shoe Low Limit 0.1MΩ / 1MΩ (Option 0.75Ω) Wrist High Limit 10MΩ / Wrist Low Limit 0.75MΩ
Measurement Level System	Less than 100MΩ ± 10% / over 100MΩ ± 20%
Measuring MAX Current	Lower : 25μA Shoes Mode : Left side → Right side
Power Supply	AC Adapter (DC6V) Display LED
Dimension	Measurement part : 200mm x 130mm x 40mm Dual electrode plate: 350mm x 160mm x 35mm
Connection	USB B type : Transfer Data into Windows PC *Download software from website *Wrist Strap : Sold Separately (Optional)

ELEPASS SERIES

ELEPASS COOL N

WHITE



GRAY



Upper
Sole
Size
Standard Weight
ESD value

Artificial Leather
Polyurethane Foam
22.0 - 28.0, 29.0, 30.0 cm.
440g/pair (Reference size 26 cm.)
 $1.0 \times 10^5 \leq R \leq 1.0 \times 10^8$



ELEPASS COOL LIGHT N

WHITE



GRAY



Upper
Sole
Size
Standard Weight
ESD Value

Artificial Leather
Polyurethane Foam
S / M / L / LL / LLL
420 g. / pair (Reference size L)
 $1.0 \times 10^5 \leq R \leq 1.0 \times 10^8$

S	M	L	LL	LLL
23.5-24	24.5-25	25.5-26	26.5-27	27.5-28

NITRILE GLOVES



✓ Powder Free

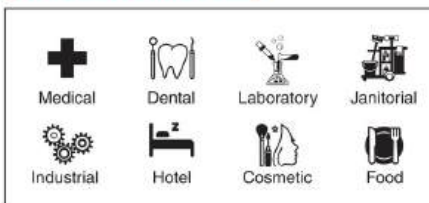
✓ Oil Resistance

✓ Chemical Resistance

✓ Perfect Fit

✓ Anti - Slip

STANDARD



Material	100% Nitrile
Thickness	6.3mil (0.16mm.)
Size	S / M / L
Color	Blue
Package	100pcs/box (50 pairs)

FOOTWEAR ACCESSORIES



INSTEP PRO FOR SNEAKER

Material	Size	Color
Resin / Artificial Leather	M, L, LL	Navy / White

INSTEP E BLACK FOR ACF

Material	Size	Color
Aluminium	M, L	Black

ACF CUP INSOLE

Material	Size	Color
EVA	22.0-30.0	Yellow

SAFETY HELMET

SC-MB RA KP

windflow



Material	Weight	Head Size
ABS	400g	55-62 cm.

SC-11PCLV RA KP

windflow



Material	Weight	Head Size
PC	510g	52.5-63 cm.

SC-19PCLVS RA3 a

windflow



Material	Weight	Head Size
PC	510g	52.5-63 cm.

windflow

NEW OPTION!

- *Excellent Ventilation
- *Light Weight
- *Wider
- *Changeable Face Shield



侍 II
SAMURAI

Material	Weight	Head Size

BUMP CAP FOR LIGHT INDUSTRY

SCL-200A



Material	Weight	Head Size
PE	175g	53-62 cm.

FLATMET 2



Material	PP / ABS / PC
Weight	420 g
Head Size	47-62cm
Accessories	Bag

- *Foldable Helmet
- *The most slim foldable helmet in the world
- Only 3.3cm!!

HELMET ACCESSORIES

INNER CAP



PAPER CAP



INNER SET



HELMET HANGER



LOGISTICS

- ✔ No More Stretch Film!

✔ Reusable Pallet Cover

✔ Washable
- ✔ Reduce Waste Less CO2

✔ Minimize Working Time

✔ Fits Any Shape



Reusable Wrap

Size	75 cm x 320 cm
Material	Polyester, PU



Reusable Pallet Cover

Size	90 cm x 150 cm
Material	Nylon, PU



SAFETY SHOES FOR LOGISTICS WAREHOUSE



MPN-305S

Material: Artificial Leather / Mesh
 Toecap: 70J
 Weight: 800g.
 Size: 22.0 - 28.0, 29.0, 30.0cm (EEE)
 Standard: JSAA



QL-15

Material: Artificial Leather / Mesh
 Toecap: 70J
 Weight: 800g.
 Size: 22.0 - 28.0, 29.0, 30.0cm (EEE)
 Standard: JSAA



PF-117 B0A

Material: Artificial Leather / Mesh
 Toecap: 70J
 Weight: 850g.
 Size: 22.0 - 28.0, 29.0, 30.0cm (EEE)
 Standard: JSAA



MPN-305S

Material: Artificial Leather / Mesh
 Toecap: 70J
 Weight: 800g.
 Size: 22.0 - 28.0, 29.0, 30.0cm (EEE)
 Standard: JSAA



QL-01

Material: Artificial Leather / Mesh
 Toecap: 70J
 Weight: 750g.
 Size: 22.0 - 28.0, 29.0, 30.0cm (EEE)
 Standard: JSAA



G3690

Material: Artificial Leather / Mesh
 Toecap: 70J
 Weight: 780g.
 Size: 22.0 - 28.0, 29.0, 30.0cm (EEE)
 Standard: JSAA

WORK ASSIST PANTS



Material: 65% polyester, 35% cotton
 Color: ● Khaki ● Navy ● Black

SIZE/CM.	Waist	Hip	Inseam
No.7	58-64	98	80
No.9	62-68	103	80
No.11	66-72	108	80
No.13	72-78	113	80
No.15	78-84	118	80
No.17	84-90	123	80

VERDEXCEL FLEX



POLO SHIRT



- Quick Dry
- Soft Touch
- Pilling Prevention
- High Durability

Size: S, M, L, XL
 Material: 65% polyester, 35% cotton
 Color: ● Khaki ● White ● Blue ● Navy ● Gray

CONSTRUCTION (SAFETY BELT/HARNESS)

130kg Maximum Arrest Force 130 kg

FULL BODY MESH HARNESS MHF-790N

Shoulder belt Width 45mm, Polyester
 Chest Buckle One touch aluminum buckle
 Chest belt Width 45mm, Nylon
 D-Rings Steel
 Shape Back X type · Thighs V type

Approximate weight
790G

※M size without lanyard



SAFETY BELT

100kg Maximum Arrest Force 100 kg



MSK-700L

Buckle	Weight	Color	Size	
Aluminum made slide	850g	Blue Yellow Black	Belt	W 50mm x L 1200mm
			Lanyard	W 17mm x L 1150mm



MFD-500L-10L

Buckle	Weight	Color	Size	
One-touch	850g	Blue Yellow Black	Belt	W 50mm x L 1200mm
			Retractable Lanyard	W 15mm x L 1400mm
			Elastic Lanyard	W 32mm x L 800-850mm



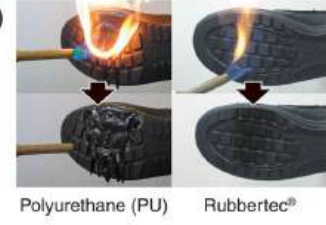
MSK-501L

Buckle	Weight	Color	Size	
One-touch	170g	Blue Yellow Black	Belt	W 50mm x L 1200mm
			Retractable Lanyard	W 17mm x L 1150mm
			Elastic Lanyard	W 27mm x L 1250mm

Rubbertec® RT712N ESD RESIN TOE CAP

JIS T8103

Toe Cap Wide Resin Toe Cap 70J
 Upper Authentic Leather
 Sole Dual Density Rubber Sole
 Size 23.5-28.0, 29.0, 30.0cm (EEE)
 Standard Weight 950g / pair (Reference Size 26 cm)
 ESD Value $1.0 \times 10^5 \leq R \leq 10^8$



CUT GUARD GLOVES



Cut Guard 130

- Cut Level 3
- 13G
- Tsunooga
- PU Coating

130B

130B Long



Cut Guard CB130

- Cut Level 5
- 15G
- Tsunooga
- Nitrile Coating

SAFETY GLASSES

JIS ANSI JIS/ANSI standard UV CUT
 Double-Sided Anti-Fog



Material	PC, Nylon, PVC Lens PC (Double sides anti-fog coating)
Weight	37g

Material	PC, Elastomer, Soft PVC (nose pad) Lens PC (Double sides anti-fog coating)
Weight	28g

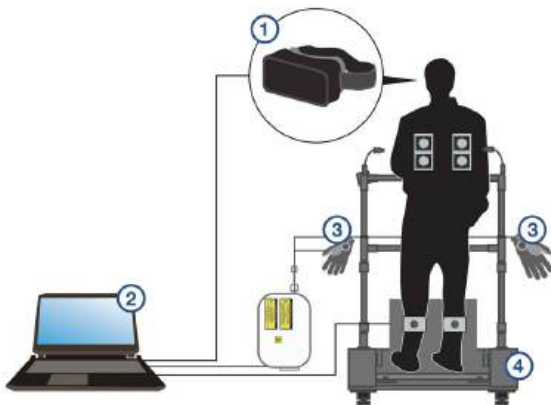
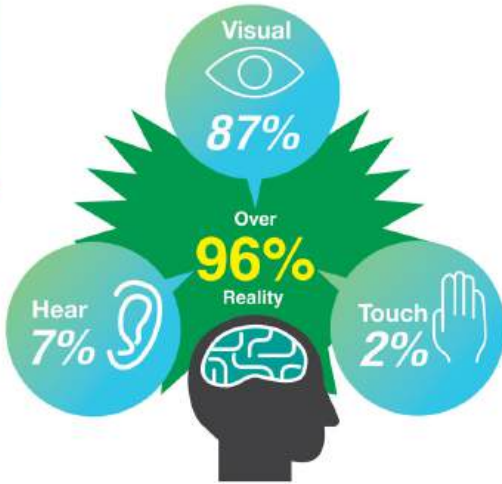
Material	PC, Elastomer, Lens PC (Double sides anti-fog coating)
Weight	50g



VR RiMM (Risk Management Method)

ACCIDENT EXPERIENCE

Enhance Your Staff's Safety Consciousness



VR RiMM SET



EASY TO USE



1. Wear gloves



2. Wearing VR goggles



3. Push button

MORE THAN 100 SCENARIOS



E-FUJIYAMA

FACILITY MONITORING SYSTEM

e-無線巡回



I'm facing difficulties as the workload has increased due to a shortage of manpower.

Patrolling through a large factory inside is challenging.

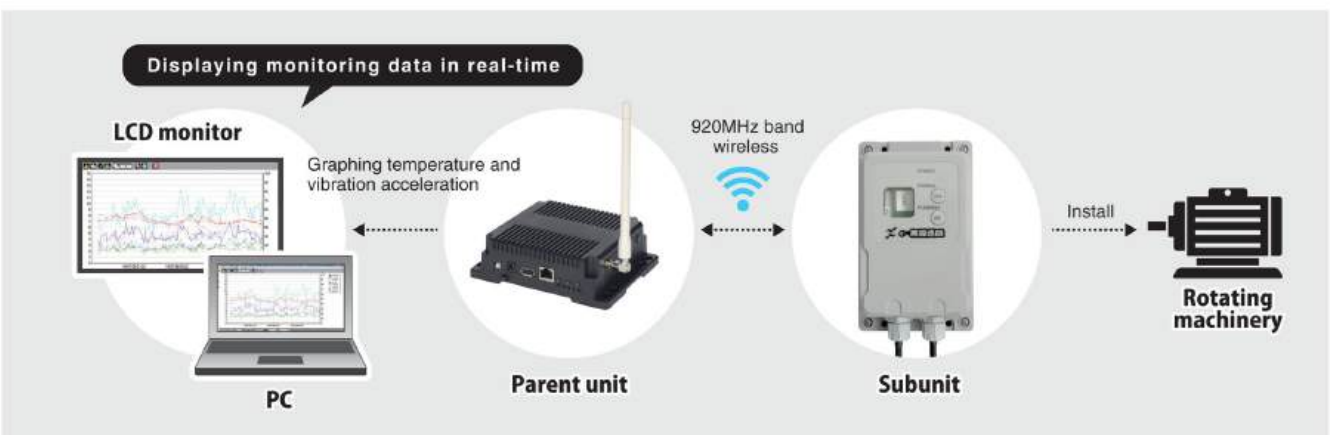
Skilled maintenance worker

I wonder if we can easily monitor using trendy IoT tools?

Even when conducting equipment auscultation during patrols, it's still challenging to detect any noticeable differences.

Young maintenance worker

Examples of system installation



Subunit sensors measure temperature and vibration acceleration, transmitting data to the main unit wirelessly using the 920MHz band.

Check and monitor the measurement value graphs displayed on LCD monitor or PC.

Target equipment Compressor, Separating equipment, Air conditioning equipment, C leaning machine, Hydraulic pump, Rotating equipment, electric motor, and others.

OIL MIST COLLECTOR

CLEAN WONDER WR SEIRES

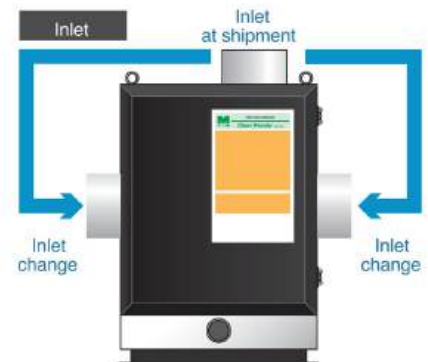
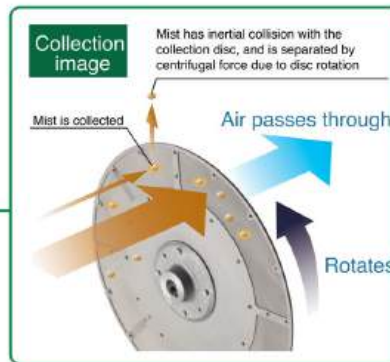
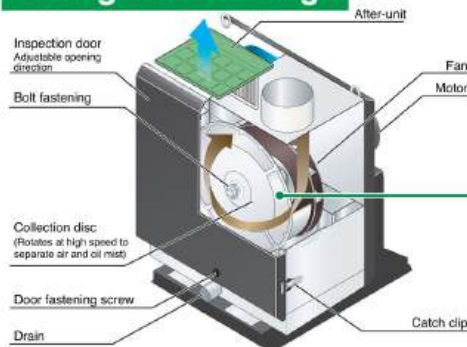
High-speed Rotating Disc Centrifugation

High-speed Rotating Disc Centrifugation

A rotating disc is mounted on the collection part to collect oil mist through inertial collision and centrifugation. In addition, the self-cleaning action of the disc by centrifugal force alleviates the problem of reduced air volume due to clogging compared to the filter method, and maintains performance for prolonged periods. (Efficiently collects particles of 1 μ m or more)



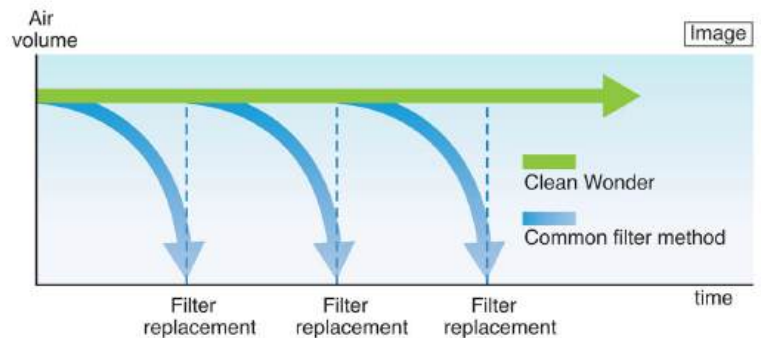
Configuration image



No Filter Replacement Required

Because the equipment is filter-free, there is less clogging and air volume is maintained. The disc can be reused simply by cleaning, therefore there is no waste, making the equipment environmentally-friendly.

A typical filter method leads to a reduction in air volume over time, as well as a decrease in collection capability. The centrifugal Clean Wonder is less susceptible to clogging due to self-cleaning, so there is little reduction in air volume, long-term collection capacity, and less maintenance work.



Specification

Model	WR-054-J	WR-104-J	WR-204-J
Power supply	Three-phase 200V AC 10% 50/60Hz		
Maximum air volume (50/60 Hz)	4.6/5.4m ³ /min	7.3/8.6m ³ /min	13/15m ³ /min
Maximum external static pressure (50/60 Hz)	0.8/1.1kPa	1.1/1.5kPa	1.2/1.7kPa
Collection method	High-speed rotating disc centrifugation		
Collection efficiency	99% (Water soluble mist)		
Motor output	0.4kW 2P	0.75 kW 2P (IE3 high efficiency motor)	1.5 kW 2P (IE3 high efficiency motor)
Temperature and humidity of service environment	0°C to 40°C. RH 90% or less (indoor specifications)		
Temperature of intake gas	0°C~50°C		
Collection target	Can be used for both oil-based and water-soluble oil mist (No collection of first and second petroleum products) (However, may not be possible to use depending on the oil mist generated)		
Maximum density at inlet	50 mg/m ³ or less		
Inlet	∅ 98mm	∅ 123mm	∅ 148mm
Noise (50/60 Hz)	66/80dB [A]	69/73dB[A]	71/75dB[A]
Weight	34kg	44kg	62kg
Drain	Rp1" socket		
Collection disc outer diameter	∅ 280	∅ 330	∅ 360
Paint color	Munsell No. 5Y9/0.5 (housing)/Munsell No. 0 (door, mortar base)		
Other	CE and RoHS compatible		

Easy Maintenance



1. Open the inspection door



2. Air blow cleaning

OIL MIST COLLECTOR

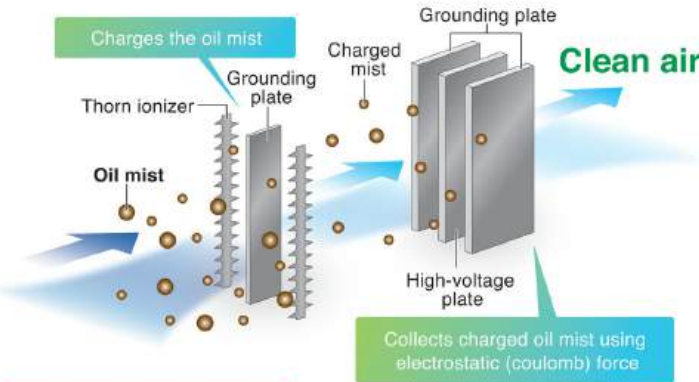
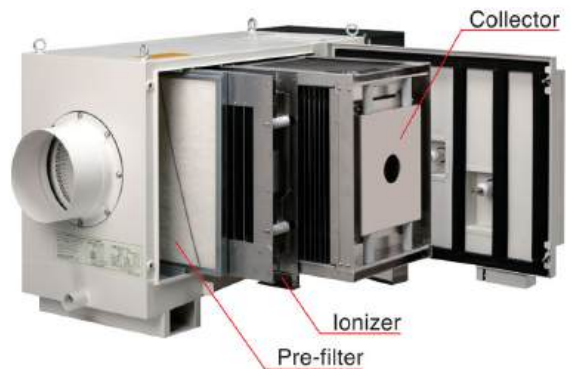
M-CLEAN MCH-15

Power supply	Three-phase 200V AC $\pm 10\%$ 50/60Hz
Related air volume	15m ³ /min
External static pressure (50/60 Hz)	180"/900Pa ²
Collection method	Two-stage type electrostatic mist collection
Collection efficiency	99.5% (weight ratio with filter paper)
Power consumption (50/60 Hz)	410 ² ~900W ²
Current Value (50/60 Hz)	2.1 ² /4.5A ²
Motor output	0.75 kW/2 pole (inverter control)
Maximum density at inlet	200mg/m ³
Temperature and humidity of service environment	0°C to 40°C, RH 90% or less
Temperature of intake gas	0°C~40°C.
Collection target	Can be used for both oil-based and water-soluble oil mist (No collection of first and second petroleum products) (However, may not be possible to use depending on the oil mist generated)
Noise	65dB(A) ¹⁾
Weight	71 kg
Drain	Rp1" socket
Paint color	Munsell No. 5Y9/0.5 (housing)/Munsell No. 0 (door, motor base)

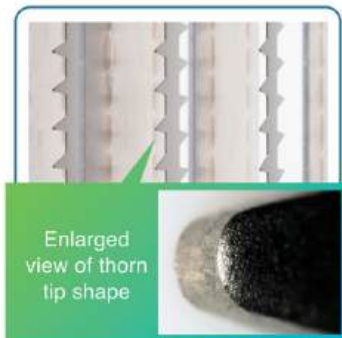
*1: At 15m³/min, inverter output frequency is 39.5 Hz (at the time of factory shipment)
 *2: At 15m³/min, inverter output frequency is 60 Hz (maximum)

Electrostatic Collector for Oil-based and Water-soluble Oil Mist

Collects oil mist (oil-based and water-soluble) with high efficiency and low-pressure loss using a collector equipped with a thorn ionizer and semi-insulated plastic shaft



Ionizer Features



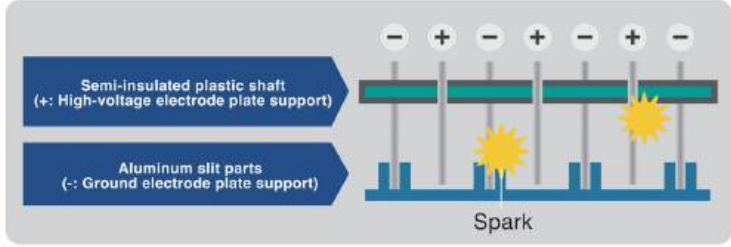
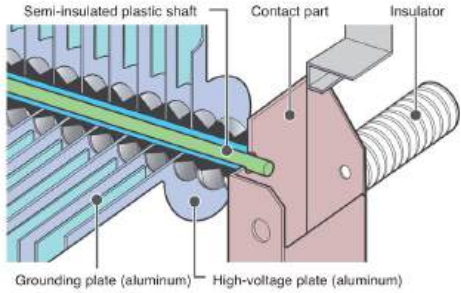
The discharge electrode material is made of pure titanium with excellent durability. The thorn tip shape is optimized to achieve high efficiency.



Sparkless Technology

Stable dust collection performance by adopting semi-insulated plastic shaft!

"Sparkless" is achieved by adopting a semi-insulated plastic shaft structure for the high voltage supply of the collector. It is less likely to leak current or generate sparks, resulting in high efficiency and stable dust collection performance.



*Structural image

MIDORI FACTORIES IN ASIA



MIDORI ANZEN (THAILAND) CO., LTD

1788 Singha Complex Building 33th Floor
 Unit 3301,3313-3314, New Petchaburi Road,
 Kwaeng Bangkokapi , Khet HuaiKwang, Bangkok 10310

Tel : +662-651-9799 Fax : +662-651-9797

- www.midorianzenthailand.com
- Midori Anzen Safety Shoes TH
- midorianzen_th
- Midori anzen (Thailand)
- มิโดริ อันเซน ไทยแลนด์



@midorianzenth



Midori Anzen TH